

WELCOME TO ECOMIST

Congratulations on your purchase of an Ecomist 5 Computerised Aerosol Dispenser. Your new Appliance is designed to increase your environmental comfort with a range of specially formulated products, including -

- Ecomist Natural Flying Insect Killer
- Ecomist Odour Neutralisers
- Ecomist Air Fresheners
- Ecomist Special fragrances "Aroma Marketing" for the retail sector and other locations

Your Ecomist 5 Dispenser Kit contains -

- 1 Ecomist 5 Computerised Aerosol Dispenser
- 3 "C" Type Alkaline Batteries
- Ecomist 5 Instruction Sheet

To complete the System an Ecomist Aerosol can of your choice is required (These Aerosol Cans are purchased separately)

TO INSTALL A NEW DISPENSER UNIT

A) Choose a location where air currents are likely to circulate. For example above an internal door, or in a breezeway in a hallway. It is important that the aerosol spray is circulated to the areas where it is most required. It is not a good idea to install the dispenser next to an open window where the spray will be carried directly outside the room or next to an extractor fan. Again the effect of the aerosol spray will be lost. Install the Dispenser in an "up breeze" location so that the airflow will take the spray particles to the area where they are needed.

B) Select a position about 2 metres above the floor preferably where there is a clear area between the chosen position and the floor. Your Ecomist Dispenser has been designed for flat wall fitting. Avoid installing above furniture or polished surfaces. You may need additional installations for larger areas or where there is high airflow to ensure perfect results.

FASTEN BACK PLATE TO THE WALL

- A)** Separate the front cover from the backplate. A key lock can be found on the bottom of the Dispenser. A new Dispenser is not locked. Remove the Metal Back Plate by hinging it upwards.
- B)** Using the Backplate as a template, mark the positions for two screws
- C)** Install top screw loosely and align unit vertically
- D)** Install second screw, screw both to almost tight, align unit exactly upright and tighten both screws. (Not too tight if wall is plaster board)

Your Ecomist Dispenser is programmable for 24 - hour automatic operation

-See Diagram and instructions below on how to change the program to suit your personal environment and comfort.

CHANGING THE AUTO SPRAY PROGRAM

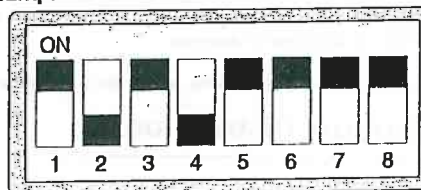
The programme can be changed at any time to suit you. Both the time interval between the sprays and the amount being sprayed can be changed at any time. You can also have a different spray interval during the day from what is set during the night-time. (Please note that the dispenser has a very sensitive Light Sensor built into the unit. It will recognise DAY when it detects any light at all. It will recognise NIGHT when it does not sense any light in the area. In areas with a security light is turned on during the night hours - turn the dispenser away from the light source to ensure that the night programme will activate.

Programming example Sellings :-

Day : 8 mins

Night :15 mins

Qty :30 mg



DAY NIGHT QTY

PROGRAMME TABLE

1	2	3	4	5	6	7	8	SWITCH NUMBER
DAY FREQUENCY	DAY FREQUENCY	DAY FREQUENCY	NIGHT FREQUENCY	NIGHT FREQUENCY	NIGHT FREQUENCY	QUANTITY DISPENSED	DISPENSING FREQUENCY	
<input type="checkbox"/>	<input type="checkbox"/>	<input type="checkbox"/>						OFF
<input type="checkbox"/>	<input type="checkbox"/>	<input type="checkbox"/>						0.5 MINUTE
<input type="checkbox"/>	<input type="checkbox"/>	<input type="checkbox"/>						1.0 MINUTE
<input type="checkbox"/>	<input type="checkbox"/>	<input type="checkbox"/>						2.0 MINUTES
<input type="checkbox"/>	<input type="checkbox"/>	<input type="checkbox"/>						4.0 MINUTES
<input type="checkbox"/>	<input type="checkbox"/>	<input type="checkbox"/>						8.0 MINUTES
<input type="checkbox"/>	<input type="checkbox"/>	<input type="checkbox"/>						15.0 MINUTES
<input type="checkbox"/>	<input type="checkbox"/>	<input type="checkbox"/>						SPARE
			<input type="checkbox"/>	<input type="checkbox"/>	<input type="checkbox"/>			OFF
			<input type="checkbox"/>	<input type="checkbox"/>	<input type="checkbox"/>			0.5 MINUTE
			<input type="checkbox"/>	<input type="checkbox"/>	<input type="checkbox"/>			1.0 MINUTE
			<input type="checkbox"/>	<input type="checkbox"/>	<input type="checkbox"/>			2.0 MINUTES
			<input type="checkbox"/>	<input type="checkbox"/>	<input type="checkbox"/>			4.0 MINUTES
			<input type="checkbox"/>	<input type="checkbox"/>	<input type="checkbox"/>			8.0 MINUTES
			<input type="checkbox"/>	<input type="checkbox"/>	<input type="checkbox"/>			15.0 MINUTES
			<input type="checkbox"/>	<input type="checkbox"/>	<input type="checkbox"/>			SPARE
						<input type="checkbox"/>	<input type="checkbox"/>	20 Mgm
						<input type="checkbox"/>	<input type="checkbox"/>	30 Mgm
						<input type="checkbox"/>	<input type="checkbox"/>	50 Mgm
						<input type="checkbox"/>	<input type="checkbox"/>	100 Mgm

INSTALLING THE BATTERIES

This dispenser requires 3 Alkaline type "C" batteries. These batteries should last in excess of 10 months of Dispenser usage before new ones are needed. Carbon Zinc type batteries will generally not last beyond about six weeks. We recommend you purchase new batteries from your Ecomist Agent. When inserting new batteries observe + and - polarity marked at each end of the batteries.

INSTALLING NEW AEROSOL CANS

This innovative new Dispenser has been designed to take two active aerosol cans at one time. Two Valve Heads fire alternately. This extends the time between services considerably.

A) Unscrew the old empty cans anti-clockwise from the valve heads. The valve heads will swivel upwards to aid in the changing of these aerosols.

B) Screw the new cans clockwise into each of the valve heads, only finger tight, but ensuring a complete seal.

C) Tell the Dispenser that you have installed new aerosol cans. Push the button on the circuit board labelled "Can Reset". The computer now knows that you have installed new aerosol cans and it will begin counting the number of sprays and the amount of each spray and let you know when your aerosol cans are empty. When empty the Red and Green lights will flash together every ten seconds. The dispensing programme can be changed any number of times during the lifetime of the aerosol cans and the computer will still be able to advise you the approximate time when the aerosol cans will require changing. (This function is only accurate if full aerosol cans are installed at the outset.)

D) Switch On

All Controls for this Dispenser are found on the Electronic Circuit Board on the inside of the Dispenser. In a new Installation or when replacing empty cans in an existing installation press the button (ON) 10 times to establish an airborne drift. (Keep eyes averted. If accidentally sprayed in eyes - flush with water).

E) Attach the Front Metal Cover to the Backplate.

Take the front cover, with the aerosol cans and batteries in place, to the backplate that has already been fastened to the wall. Hook the top of the front cover onto the top of the back plate, hinge down and lock into place. A key lock has been provided to stop unauthorised access into the dispenser.

CONTROLS

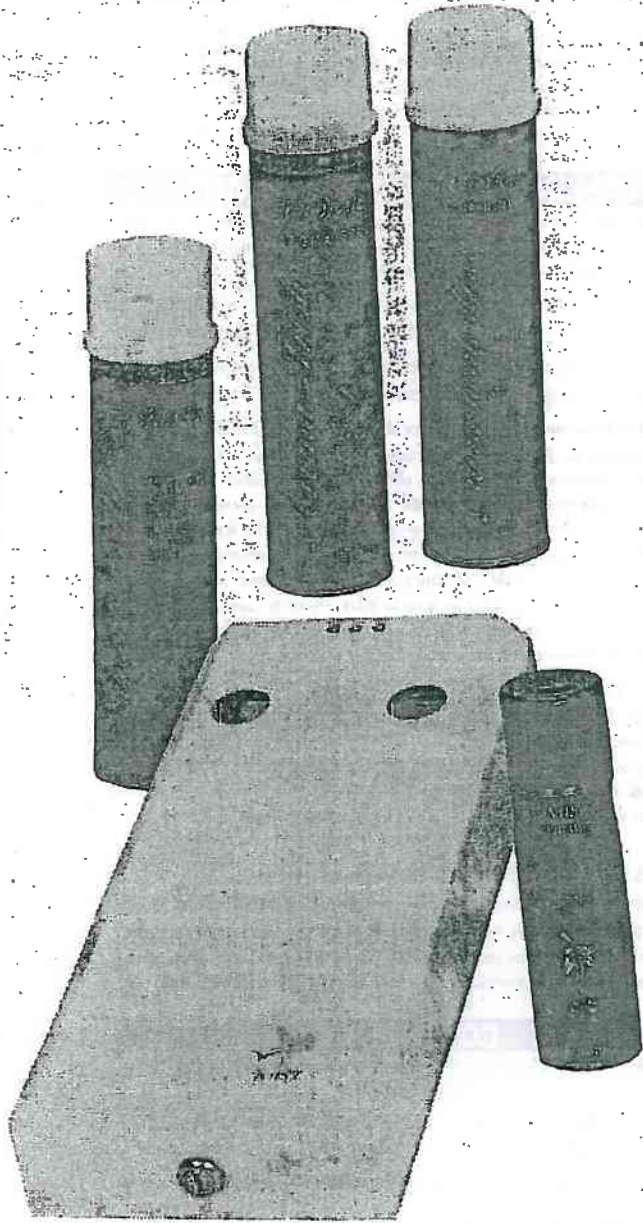
All Controls are on the Electronic Circuit Board on the inside of the Dispenser -

- (ON) ON Switch
- (OFF) OFF Switch
- (RESET) New Aerosol Installed Reset Button

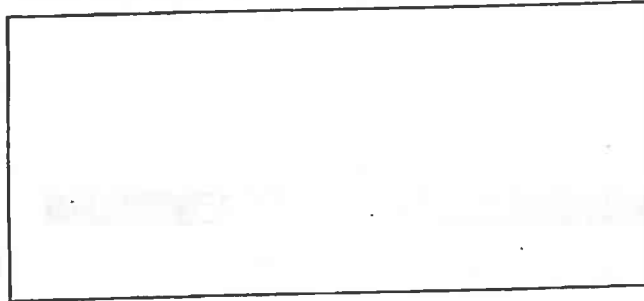
LIGHTS OPERATION

Green Light Blinks on its own (every 10 seconds) Normal Operation
 Red Light Blinks on its own (every 10 seconds) Change Batteries
 Green and Red Lights blink together (every 10 seconds) - change aerosol cans.

ECOMIST WARRANTY



Your Ecomist Distributor



ECOMIST®
Enhancing your Environment

TO RE-ORDER PHONE
0800 75 75 78 OR VISIT
www.ecomistsystems.com

ECOMIST SYSTEMS LTD.
Phone +64 9 578 0140
Fax +64 9 578 0141
Email info@ecomistsystems.com

